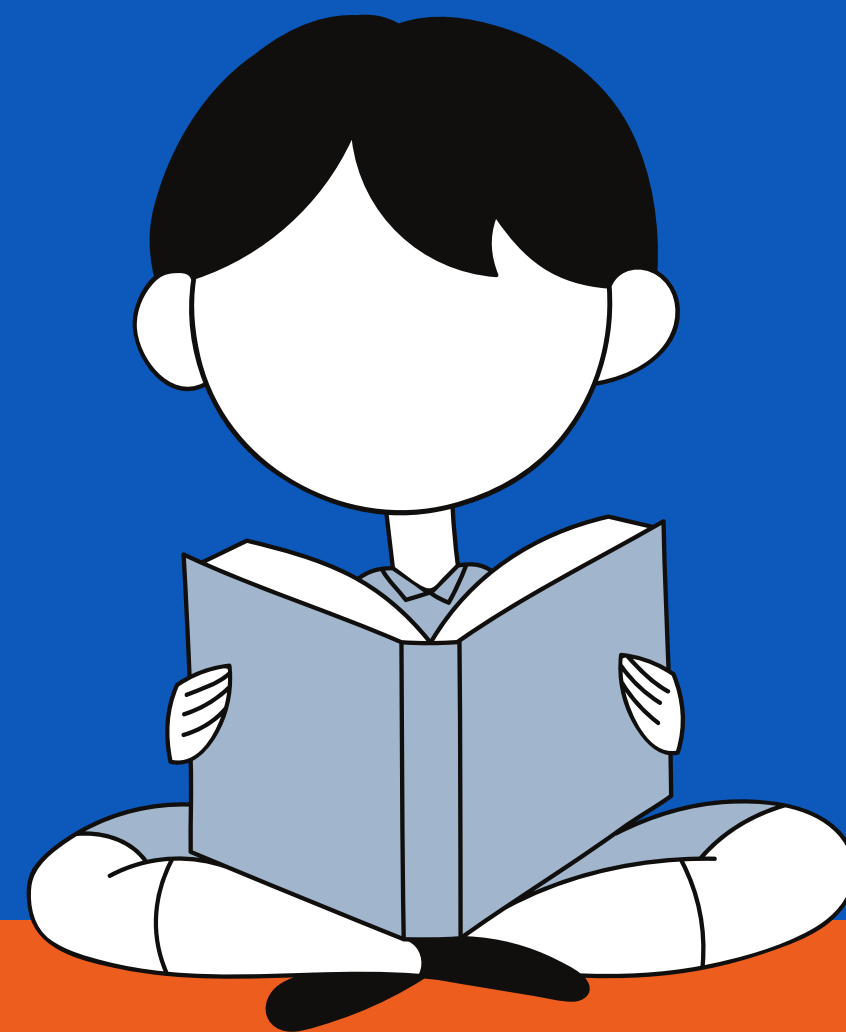


TALK 2 U

EXERCÍCIOS

# MODAL "SHOULD"



MATERIAL PARA ALUNOS DO CURSO TALK2U

# QUESTÕES

ESCOLHA APENAS UMA OPÇÃO

1) Qual opção representa a frase "Você deveria ter estudado mais":

- A) You should have studied more.
- B) Should you have studied more.
- C) You may have should studied more.
- D) You should study more.

2) Qual opção representa a frase "Ela deveria chegar na próxima semana":

- A) Should she come next week.
- B) She should come next week.
- C) Next week she should arrive.
- D) She should arrive next week.

3) Qual opção representa a frase "Você não deveria bocejar durante a palestra.":

- A) Should you yawn during the lecture.
- B) You shouldn't do that during your lecture.
- C) You shouldn't yawn during the lecture.
- D) You should yawn during the lecture.

4) Qual opção representa a frase "Você não deveria desperdiçar seu dinheiro com tantos presentes":

- A) Should you have spent your money on so many gifts.
- B) You shouldn't spent my money on so many gifts.
- C) You should have spent less money on these presents.
- D) You shouldn't waste your money on so many presents.

5) Qual opção representa a frase "Você deveria comprar um carro":

- A) You should buy a car.
- B) Should you buy a car.
- C) I think you should buy a car.
- D) You should buy a new car.

# RESPOSTAS

CONSULTE APENAS DEPOIS  
DE RESPONDER, HEIN! :)



1) Resposta A

2) Resposta D

3) Resposta C

4) Resposta D

5) Resposta A

**O CÉU É O LIMITE**

Continue praticando para chegar à fluência!

TALK 2 U  
SUA ESCOLA ONLINE DE INGLÊS

