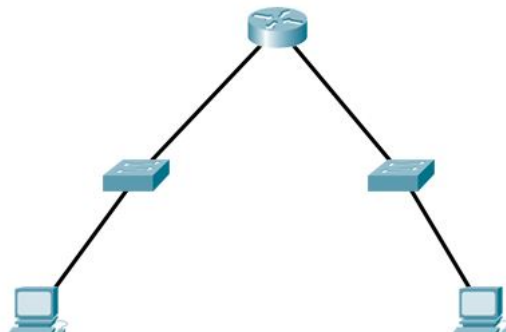


Configuring subnet based on users

Your company recently bought the following range of IP addresses 198.5.3.0 and it's needed to split it in a way to allow 45 users per subnetwork



Your task as a network engineer is to configure the subnetwork on the left-hand side with the IPs provided by the first subnet and the subnetwork on the right-hand side with the IPs provided by the second subnet. In the end, both computers shall be able to ping each other.

Link de download: <https://drive.google.com/open?id=0BzmYQVmw4W7ndWwteFhwY0s4Q2c>
(<https://drive.google.com/open?id=0BzmYQVmw4W7ndWwteFhwY0s4Q2c>)

(Você precisará do packet tracer para esse exercício)

Dicas:

- Lembre-se das regras que vimos, temos 45 usuários, encontre esse valor binário
- Reserve a quantidade de bits 0 da máscara de rede
- Descubra a transição do bit 1 para o bit 0 para encontrar assim as sub-redes