

Soluções de Dados, Big Data e Machine Learning

Módulo 3 – Segunda Aula Interativa

PROF. GUSTAVO AGUILAR



Informações importantes

- Acesse a aula com o seu nome completo e com o mesmo e-mail utilizado no cadastro do ambiente de aprendizagem do IGTi. Entrou com os dados errados? É só sair da sala e entrar com os dados corretos!
- As presenças das Aulas Interativas são computadas através de uma enquete, que será realizada no ambiente de aprendizagem do IGTi. Para sua frequência ser computada, quando solicitado pelo professor, você deverá ir até a seção “Enquete de presença da Aula Interativa”, localizada na Área Acadêmica da disciplina, e responder a enquete. Essa seção estará logo abaixo da que contiver o link para a Aula Interativa em questão. A enquete ficará no ar por 10 minutos e sua nota estará disponível ao término desse tempo.
- Utilize o chat para interagir com os colegas durante a aula interativa! Em caso de dúvidas sobre o conteúdo, é só postá-las no Q&A que o tutor irá respondê-las! Lembre-se que você ainda pode esclarecer as suas dúvidas nos fóruns disponibilizados no Ambiente de Aprendizagem.

Informações importantes

- Ah! E se você não conseguir assistir a aula interativa, não se preocupe! Sua gravação ficará disponível no Área Acadêmica, juntamente com os slides utilizados pelo professor, em até 24 horas úteis após o término da aula. Você também poderá realizar a atividade de reposição para recuperar os pontos de presença!
- Se você precisar solicitar prorrogação e/ou 2ª oportunidade para entrega de atividades, saiba que isso é realizado somente mediante a apresentação de atestado médico ou de óbito de parentes de 1º grau.
- Para melhor experiência nas aulas interativas, sugerimos que você baixe o aplicativo do Zoom no seu computador.

Nesta Aula



- ☐ Azure Virtual Desktop.
- ☐ Automação do Aprovisionamento.
- ☐ Pipelines no Azure Data Factory.
- ☐ Azure Migrate.
- ☐ Azure Database Migration.
- ☐ Azure Information Protection.
- ☐ Quiz Premiado.

Azure Virtual Desktop



Microsoft Azure

Search resources, services, and docs (G+)

[Home](#) > [Marketplace](#) >

Windows Virtual Desktop - Provision a host pool

Microsoft

Windows Virtual Desktop - Provision a host pool [Save for later](#)

Microsoft

Create

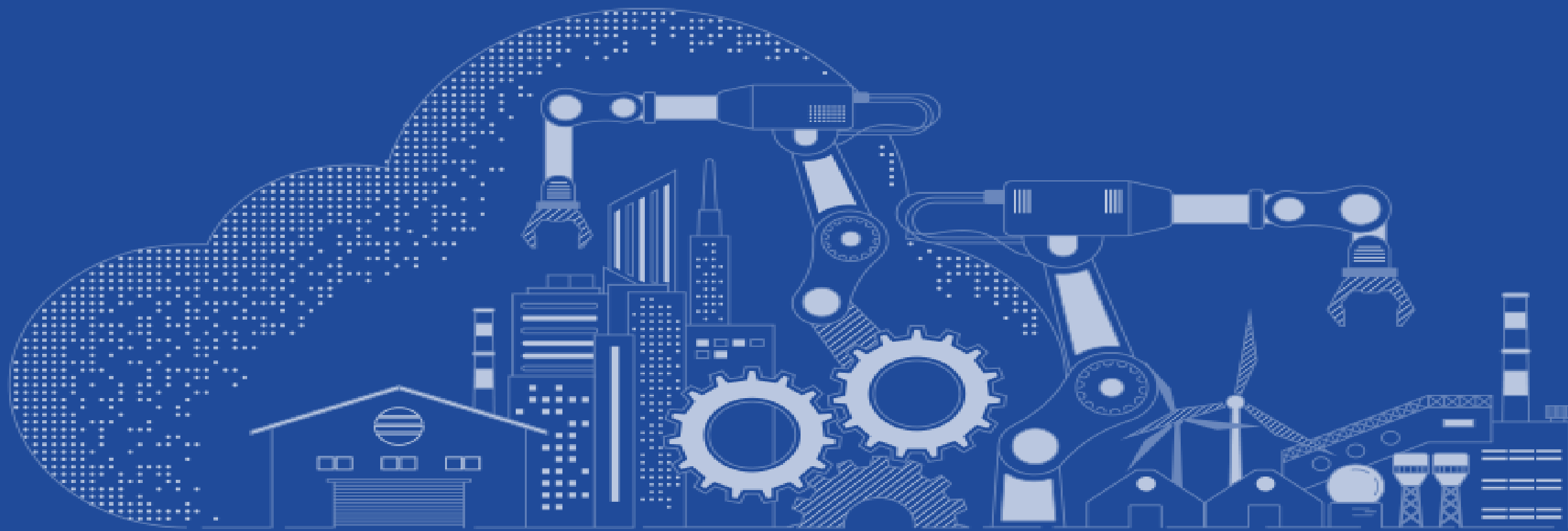
[Overview](#) [Plans](#)

Windows Virtual Desktop allows you to deploy and scale Windows and Office on Azure in minutes, with built-in security and compliance.

Windows Virtual Desktop includes the following benefits:

- A multi-user Windows 10 experience, including compatibility with Microsoft Store and existing Windows line-of-business apps while delivering cost advantages.
- The best service to virtualize Office 365 ProPlus running in multi-user virtual scenarios.
- Provides Windows 7 virtual desktop with free [Extended Security Updates](#).
- A scalable service to deploy and manage Windows virtual machines, using Azure for compute, storage, rich diagnostics, advanced networking, connection brokering, and gateway.
- Allows you to virtualize both desktops and apps.
- Deeply integrated with the security and management of Microsoft 365.

Automação do Aprovisionamento



Pipelines no Azure Data Factory

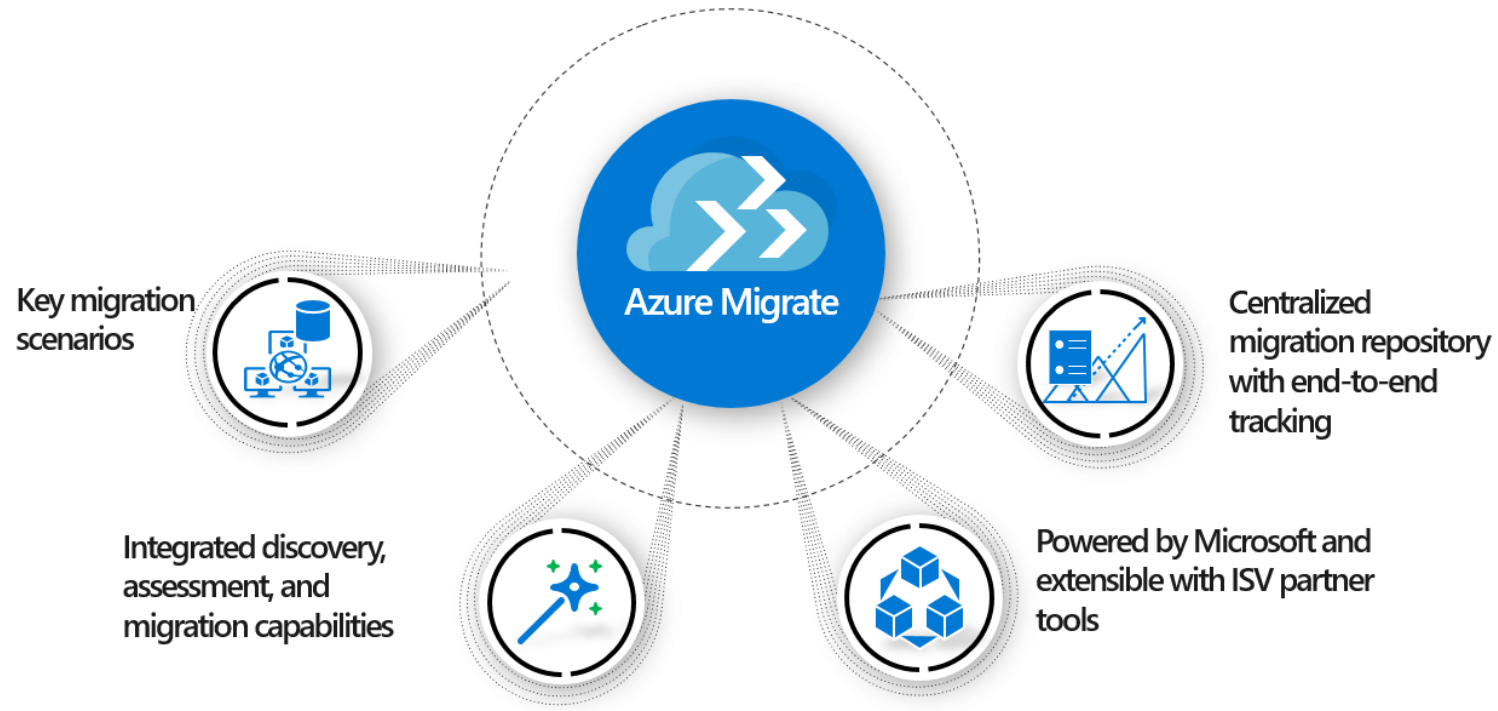


The screenshot shows the Microsoft Azure Data Factory 'Template gallery' interface. At the top, the header bar includes 'Microsoft Azure | datafactorybtclc', a search bar with 'Search resources', and user information 'gustavoagil@outlook.com.br'. Below the header, a navigation bar contains actions like 'Data Factory', 'Publish all', 'Validate all', 'Refresh', 'Discard all', 'Data flow debug', and 'ARM template'. The left sidebar, titled 'Factory Resources', lists 'Pipelines' (0), 'Datasets' (0), and 'Data flows' (0). The main area is titled 'Template gallery' and features a 'Filter' section with a search bar and checkboxes for categories like 'Copy', 'Transform with Data Flow', 'External activities', 'SSIS', and 'Prep with Data Flow'. It also has 'Created by' (Microsoft, My templates) and 'Tag' (All) dropdowns. The main content area displays four templates: 'Bulk Copy from Database to Azure Data Explorer', 'Bulk Copy from Database', 'Bulk Copy from Files to Database', and 'Copy and convert data from Office 365 into Common Data Model for Open Data...'. Each template card includes a description and the 'by Microsoft' attribution.

Azure Migrate



Azure Migrate—Hub for Datacenter Migration



Azure Migrate



[Home](#) > [Marketplace](#) >

Azure Migrate

Microsoft



Azure Migrate [Save for later](#)

Microsoft

Create

Overview

Plans

Azure Migrate helps you discover, assess, and migrate applications, infrastructure, and data from your on-premises environments to Azure. You can centrally track progress of your migration journey across multiple Microsoft and third-party tools.

This includes the following functionality:

- Extensible approach with choice across Microsoft and popular third-party assessment and migration tools.
- Integrated experience for discovery, assessment, and migration with end-to-end progress tracking for servers and databases.
- Server Assessment and Server Migration for large-scale VMware, Hyper-V, and physical server migrations.
- Database Assessment and Database Migration across various database targets including Azure SQL Database and Managed Instance.

Useful Links

[Documentation](#)

Azure Migrate



Microsoft Azure

Search resources, services, and docs (G+/)

gustavoagl@gmail.com

[Home](#) > [Marketplace](#) > [Azure Migrate](#) >

Azure Migrate
Microsoft

[Get started](#) [Explore more](#)

[Overview](#)

Migration goals

[Servers](#)

[Databases](#)

[VDI](#)

[Web Apps](#)

[Data Box](#)

Manage

[Discovered items](#)

Support + troubleshooting

[New support request](#)

Migrate your on-premises datacenter to Azure

Discover, assess and migrate your on-premises applications using Microsoft or third-party tools, or [find an expert](#) to help with your migration. [Learn more](#)

Windows and Linux servers

Discover, assess and migrate your on-premises VMware and Hyper-V virtual machines or Physical servers to Azure.

[Assess and migrate servers](#)

SQL and other databases

Assess and migrate your on-premises databases to Azure SQL Database Managed Instance or Azure SQL Database.

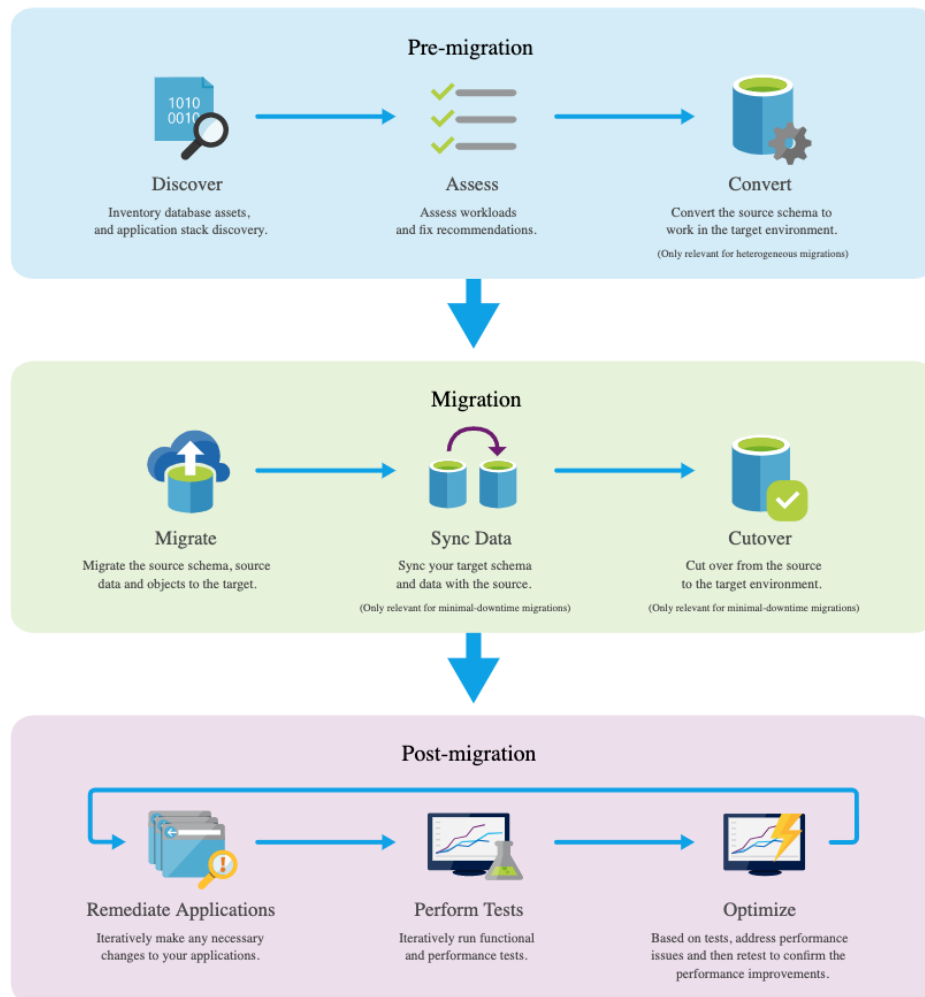
[Assess and migrate databases](#)

Explore more scenarios

Assess and migrate web apps, migrate data and assess virtual desktop infrastructure (VDI). Find guidance on various migration activities

[Explore more](#)

Azure Database Migration



Azure Migrate

A central hub for starting, executing, and tracking your Azure migration.

Data Migration Assistant

A tool for assessing source SQL databases for potential compatibility issues on your target platform.

Azure Database Migration Service

An end-to-end solution for migrating multiple sources to cloud database platforms at scale.

SQL Server Migration Assistant

A tool for assessing competitor source databases for potential compatibility issues on your target platform.

Database Experimentation Assistant

An experimentation solution for evaluating a targeted version of SQL Server for a specific workload.

Data Access Migration Toolkit (Preview)

A VS Code extension for analyzing Java and .Net source code and detecting data access API calls and queries.

<https://datamigration.microsoft.com/>

Azure Information Protection



[Home](#) > [New](#) >

Azure Information Protection 
Microsoft

“AIP”



Azure Information Protection [Save for later](#)
Microsoft

Create

Overview Plans

Build and deploy organizational policies for controlling sensitive information

- Define how users classify and label information
- Set conditions for automatic detection of sensitive information
- Specify how to apply RMS protection to sensitive information



Azure Information Protection

A screenshot of an Outlook email window. The window title is "Reminder - end of month...". The ribbon shows "File" and "Message" tabs. Below the ribbon, there's a "Sensitivity: General" label with a blue square icon. The email header shows "Richard Simone" with a "Executives" group icon and the time "2:21 PM". The subject is "Reminder - end of month report". The body text says "Hi all - Friendly reminder that this report is due for review by end of the week." and "Jane". At the bottom left, a "Sensitivity: General" label is highlighted with an orange box. To its right, a "Internet headers" pane is open, showing the following text: "MSIP_Label_0e421e6d-ea17-4fdb-8f01-93a3e71333b8_Name=General; MSIP_Label_0e421e6d-ea17-4fdb-8f01-93a3e71333b8_Application=Microsoft Azure Information Protection; MSIP_Label_0e421e6d-ea17-4fdb-8f01-93a3e71333b8_Extended_MSFT_Method=Automatic; Sensitivity=General".

Reminder - end of month...

File Message Tell me what you want to do

Sensitivity: General

Richard Simone | Executives 2:21 PM

Reminder - end of month report

Hi all - Friendly reminder that this report is due for review by end of the week.

Jane

Sensitivity: General

Internet headers

MSIP_Label_0e421e6d-ea17-4fdb-8f01-93a3e71333b8_Name=General;
MSIP_Label_0e421e6d-ea17-4fdb-8f01-93a3e71333b8
_Application=Microsoft Azure
Information Protection;
MSIP_Label_0e421e6d-ea17-4fdb-8f01-93a3e71333b8
_Extended_MSFT_Method=Automatic;
Sensitivity=General

Azure Information Protection



The screenshot shows a Microsoft Excel window titled "Inventory list example - Excel". The ribbon is set to "File". The "General" tab is selected in the "Info" section, with a classification level of "General". The spreadsheet contains an inventory list with the following data:

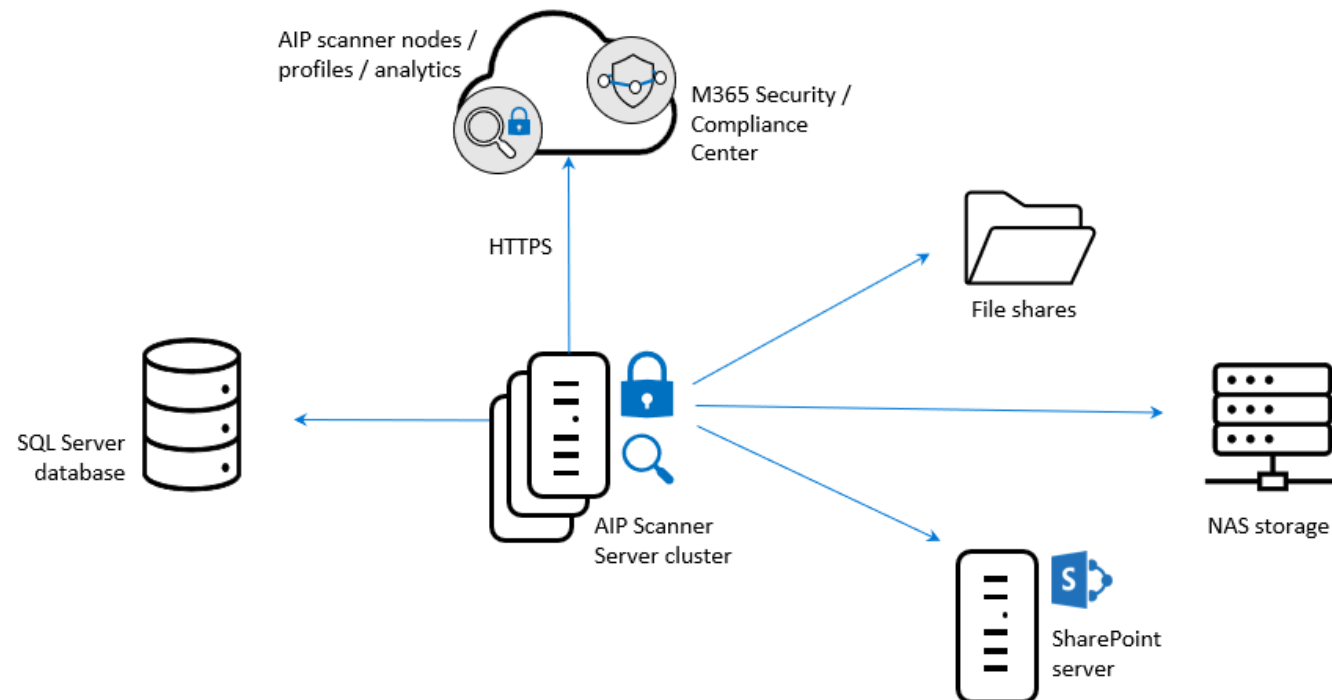
	A	B	C	D	E	F	G	H	I	J
		For Reorder	Inventory ID	Name	Description	Unit Price	Quantity in Stock	Inventory Value	Reorder Level	Reorder Time in Days
3										
4		▶	IN0001	Item 1	Desc 1	\$51.00	25	\$1,275.00	29	13
5		▶	IN0002	Item 2	Desc 2	\$93.00	132	\$12,276.00	231	4
6			IN0003	Item 3	Desc 3	\$57.00				
7			IN0004	Item 4	Desc 4	\$19.00				

A context menu is open over the "Monthly Sales Reports" folder, with the "Classify and protect" option highlighted. The status bar at the bottom indicates "Ready".

Azure Information Protection



- Azure Information Protection Unified Labeling Scanner
(Scanner para Classificação de Informações)





Quiz Premiado

- Vale-presente (gift card) da **Americanas.com**, no valor de **R\$25,00**, para o **primeiro colocado**.
- Acesse o site **www.kahoot.it** ou o app **Kahoot!**
- Digite o Game PIN: **??????**

Kahoot!